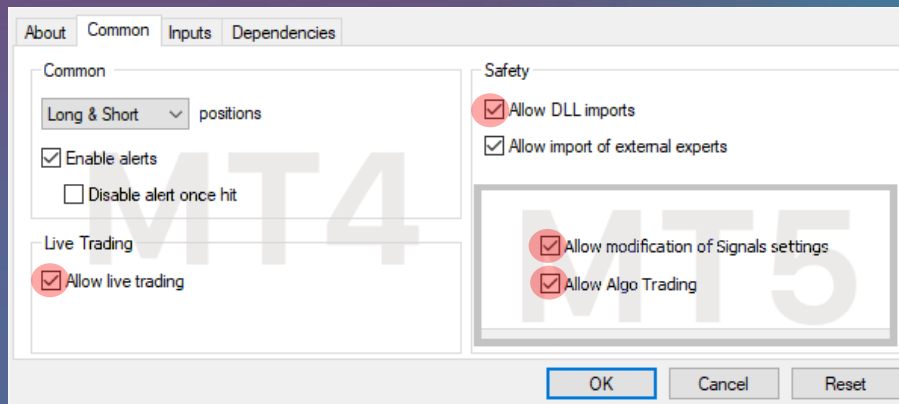


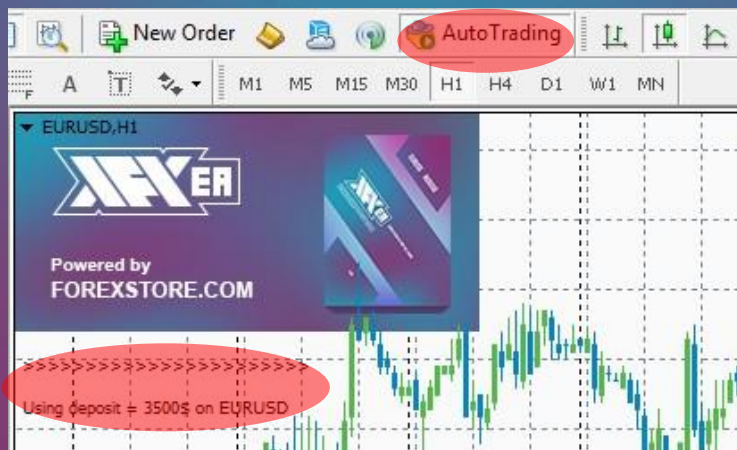


HOW TO INSTALL THE EA:

- Open your MT4/MT5 terminal. Go to File → Open Data Folder → MQL4/MQL5 → Experts. Copy here XFXea.ex4 file (if you use MT4), or XFXea.ex5 file (if you use MT5) from the archive you received. Then go to File → Open Data Folder → MQL4/MQL5 → Libraries. Copy here ForexStore.dll file (if you use MT4), or ForexStore_MT5_1.4.dll (if you use MT5) from the archive. Reboot your MT4/MT5 terminal.
- Open a new EURUSD chart and/or AUDUSD chart with any time frame, for example H1. Drag and drop XFXea from the Navigator panel to the open chart(s). If you want the EA to trade on both supported currency pairs you need to open 2 different charts (EURUSD and AUDUSD). After installing the EA on a chart, choose Common tab and check the boxes “Allow live trading” with “Allow DLL imports” (if you use MT4) and “Allow modification of Signal settings” with “Allow Algo Trading” (if you use MT5) as it is shown on the screenshot:



- Choose Inputs tab and set a mode and risk based on your deposit (more information about the parameters you can find on the next page). **We recommend to set 35% risk for trading on one currency pair, and 25% risk for trading on two currency pairs together. Other settings you should keep as default.**
- Make sure that AutoTrading is enabled and the symbol “>” is running:



NOW YOU ARE READY TO START!

HERE YOU CAN READ MORE ABOUT ALL THE PARAMETERS OF XFXEA:

AutoRisk – a money management of XFXea. If “true” the EA will set lot size automatically, based on your deposit and the risk you set. If “false” the EA will use lot size, which you can set manually in StartLot.

RiskLimit – a part of your deposit (in percentage) which the EA will use for trading. Doesn't work if AutoRisk is “false”. **The minimum deposits (\$130 for EURUSD using lot 0.01 and \$110 for AUDUSD using 0.01 lot) equal to 100% risk. To be able to trade with a lower risk your deposit should be bigger than the minimum deposits. For trading with the default 35% risk, your deposit should be more than \$370 trading on EURUSD, and more than \$315 trading on AUDUSD. For trading with the recommended 25% risk on both currency pairs, your deposit should be more than \$520.**

StartLot – lot size, which you can set manually. Does not work, if AutoRisk is “true”.

Drawdown Control – if “true” the EA works as usual and limits a drawdown. If “false” the EA removes all StopLosses and stops limiting a drawdown. It helps to wait for a rollback to clients who are willing to take that risk.

Slippage – slippage, which you can set manually, if needed.

NFA – if “Yes”, the EA will disable opening of possible opposite trades (no hedge) and apply FIFO rule. If “No”, the EA will trade without NFA limitations. **Hide Stops** will hide SL and TP for all orders, if that is needed, and the EA will close trades in the necessary moments at their Market prices, same as on our account. Please notice, despite the fact of enabling NFA option, some brokers may show a FIFO error from time to time, but it is not dangerous for the logic of the EA.

MT5 version of the EA has an additional parameter - **Order_Filling_Type**:

ORDER_FILLING_FOK – an order can be filled only in the specified amount. That is a recommended default mode for a guaranteed proper work of the original strategy.

ORDER_FILLING_IOC – a trader agrees to execute a deal with the volume maximally available in the market. In case of using this mode, there could be a violation in the strategy of the EA, and we cannot guarantee a proper operation of the system in all kind of situations. Use this mode only if the default FOK mode is forbidden and you are ready to put up with possible deviations in the strategy.

ORDER_FILLING_RETURN – in case of partial filling an order with remaining volume is not canceled but processed further. In case of using this mode, there could be a violation in the strategy of the EA, and we cannot guarantee a proper operation of the system in all kind of situations. Use this mode only if the default FOK mode is forbidden and you are ready to put up with possible deviations in the strategy.

If you have any questions, please contact us: support@xfxea.com

